

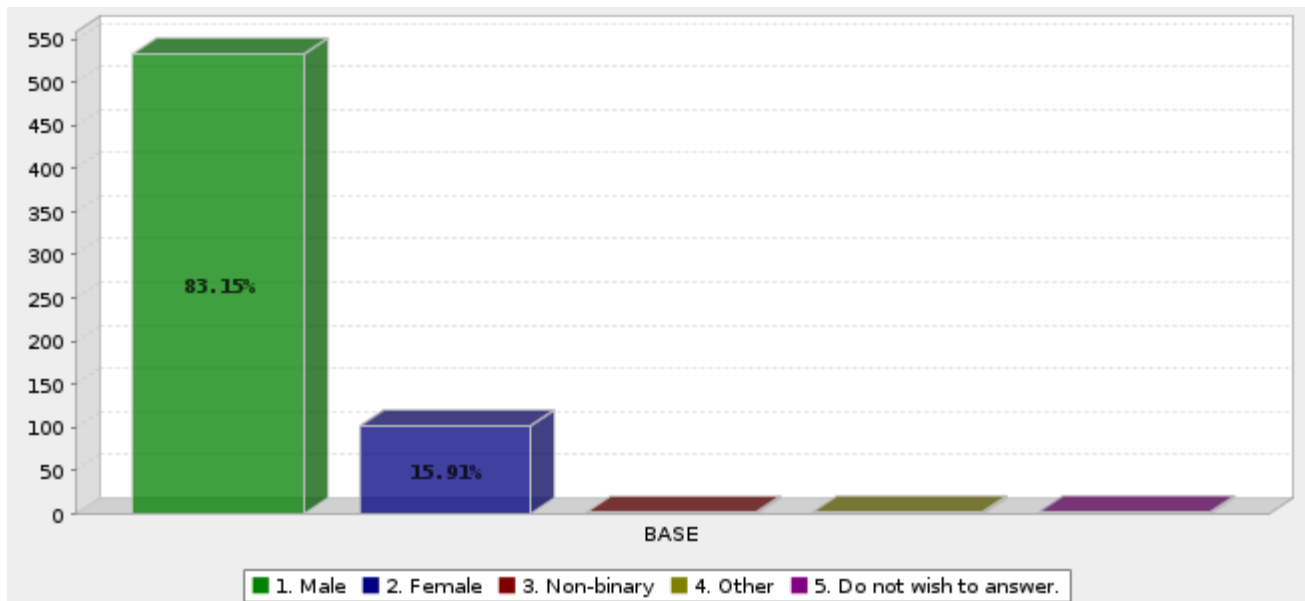
### Ware Lab Statistics for AY 2022- 23

This report summarizes data collected during the 2022-23 academic year. All students working at the Ware Lab (WL) must complete a survey prior to receiving a lab badge for the current year. Any questions or comments about the content of this report should be directed to the lab manager, Dewey Spangler, at [spangler@vt.edu](mailto:spangler@vt.edu).

#### Overall Survey Statistics:

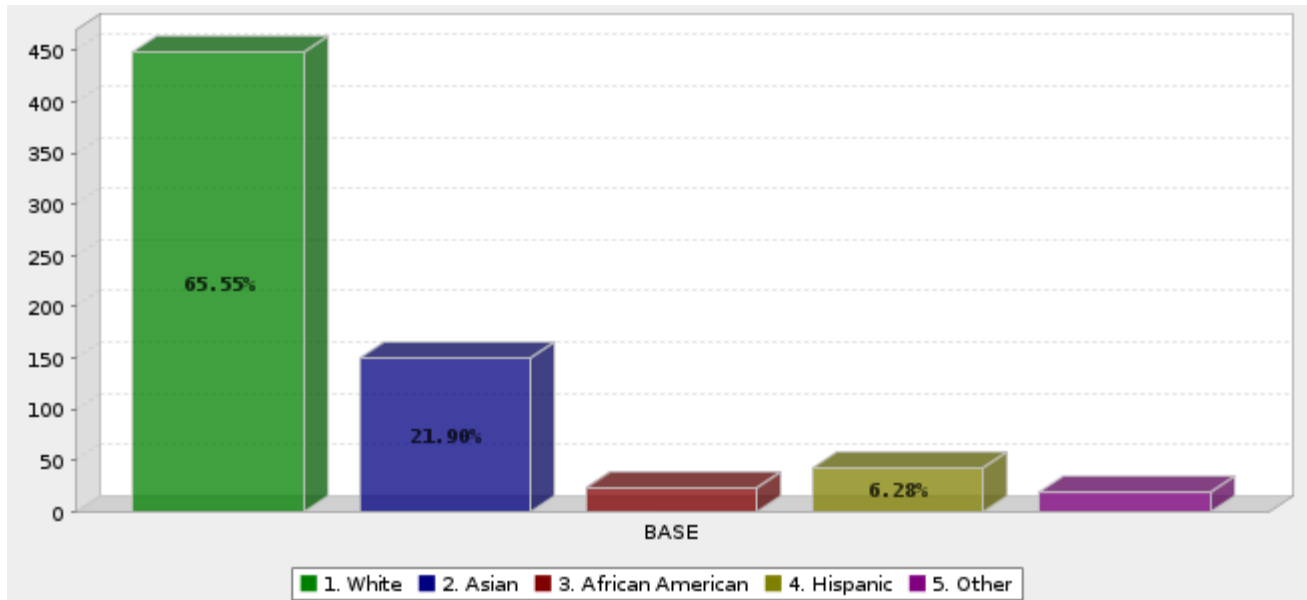
Viewed	Started	Completed	Completion Rate	Drop Outs (After Starting)	Average Time to Complete Survey
<b>1970</b>	<b>651</b>	<b>649</b>	<b>99.7%</b>	<b>2</b>	<b>8 minutes</b>

#### Ware Lab Gender:



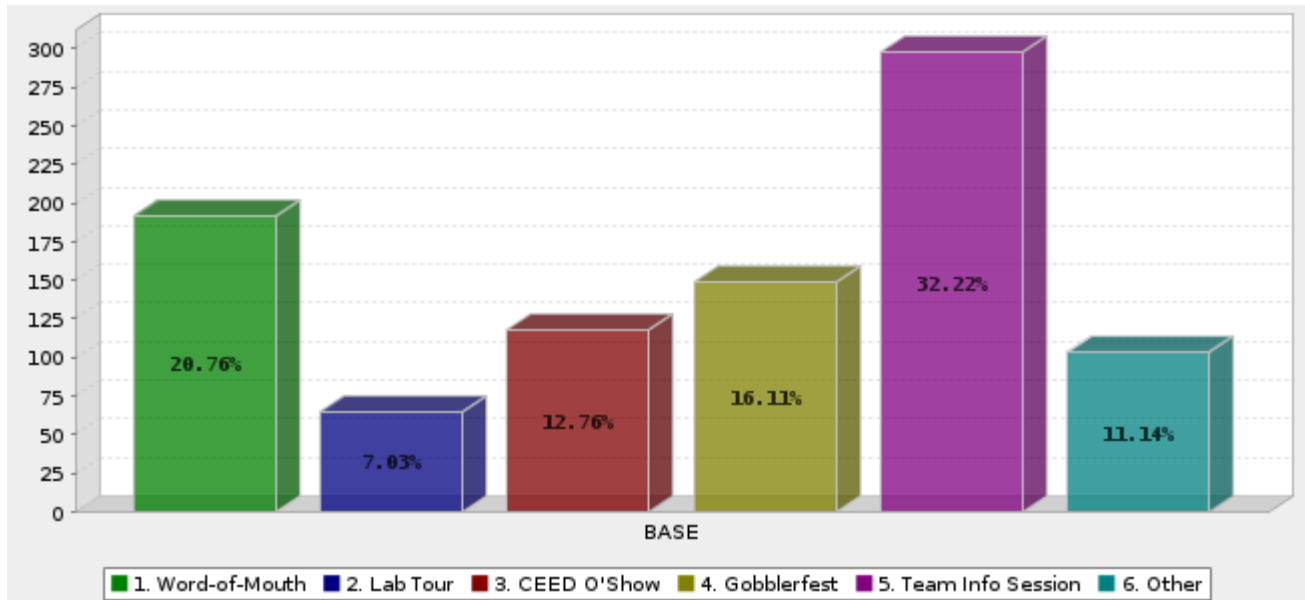
	Answer	Count	Percent
1.	Male	533	83.15%
2.	Female	102	15.91%
3.	Non-binary	1	0.16%
4.	Other	2	0.31%
5.	Do not wish to answer.	3	0.47%
	Total	641	100%
Mean :	<b>1.2</b>	Standard Deviation :	<b>0.5</b>

**Ware Lab Ethnicity:**



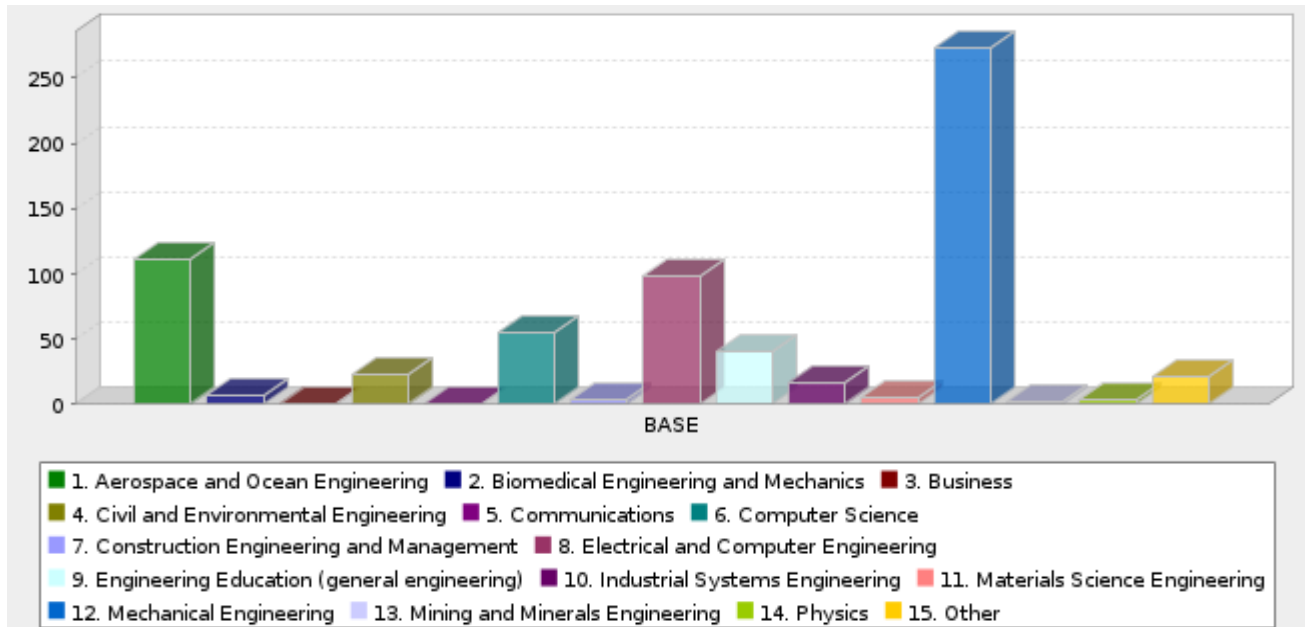
	<b>Answer</b>	<b>Count</b>	<b>Percent</b>
1.	White	449	65.55%
2.	Asian	150	21.90%
3.	African American	24	3.50%
4.	Hispanic	43	6.28%
5.	Other	19	2.77%
	<b>Total</b>	<b>685</b>	<b>100%</b>
<b>Mean : 1.6</b>		<b>Standard Deviation : 1.0</b>	

### How did you learn about Ware Lab?



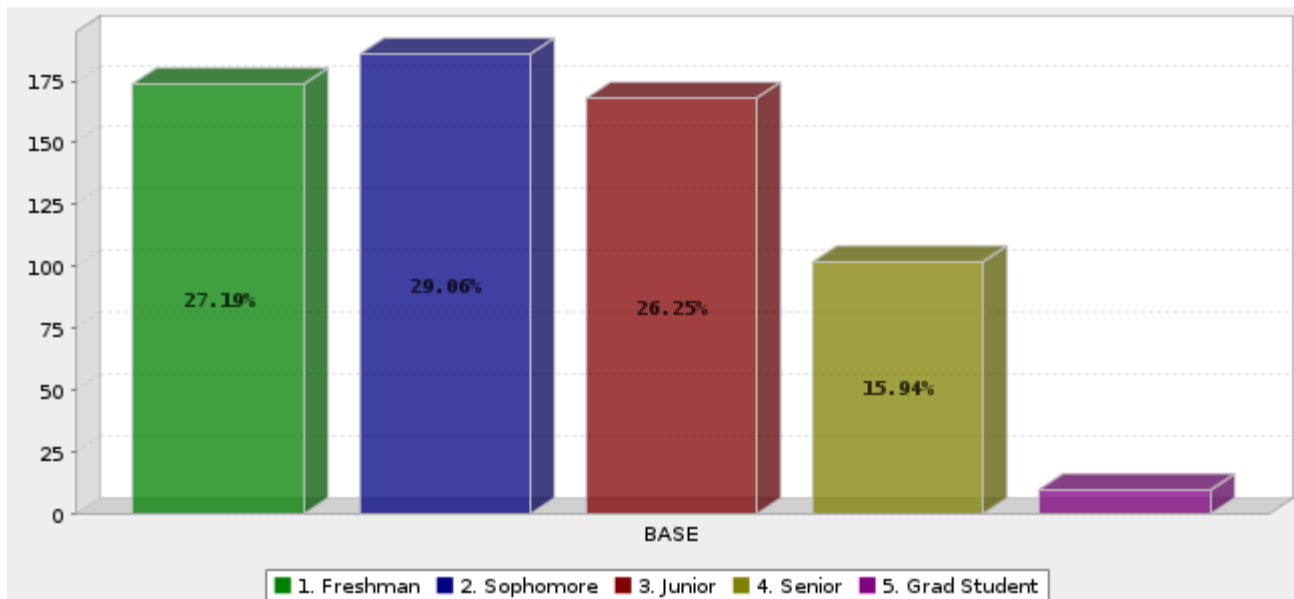
	Answer	Count	Percent
1.	Word-of-Mouth	192	20.76%
2.	Lab Tour	65	7.03%
3.	CEED O'Show	118	12.76%
4.	Gobblerfest	149	16.11%
5.	Team Info Session	298	32.22%
6.	Other	103	11.14%
	Total	925	100%
Mean : 3.7		Standard Deviation : 1.7	

**Academic Major:**



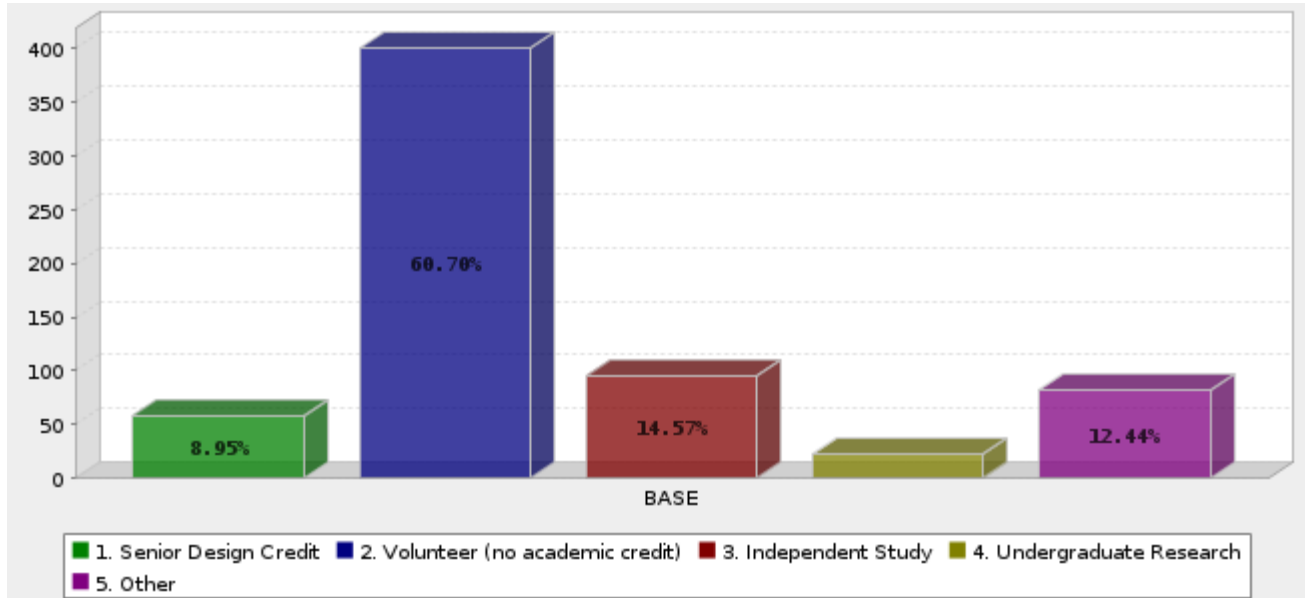
	<b>Answer</b>	<b>Count</b>	<b>Percent</b>
1.	Aerospace and Ocean Engineering	111	16.82%
2.	Biomedical Engineering and Mechanics	7	1.06%
3.	Business	1	0.15%
4.	Civil and Environmental Engineering	23	3.48%
5.	Communications	1	0.15%
6.	Computer Science	55	8.33%
7.	Construction Engineering and Management	3	0.45%
8.	Electrical and Computer Engineering	98	14.85%
9.	Engineering Education (general engineering)	40	6.06%
10.	Industrial Systems Engineering	17	2.58%
11.	Materials Science Engineering	5	0.76%
12.	Mechanical Engineering	273	41.36%
13.	Mining and Minerals Engineering	2	0.30%
14.	Physics	3	0.45%
15.	Other	21	3.18%
	<b>Total</b>	<b>660</b>	<b>100%</b>
<b>Mean : 8.5</b>	<b>Standard Deviation : 4.2</b>		

**Academic Level:**



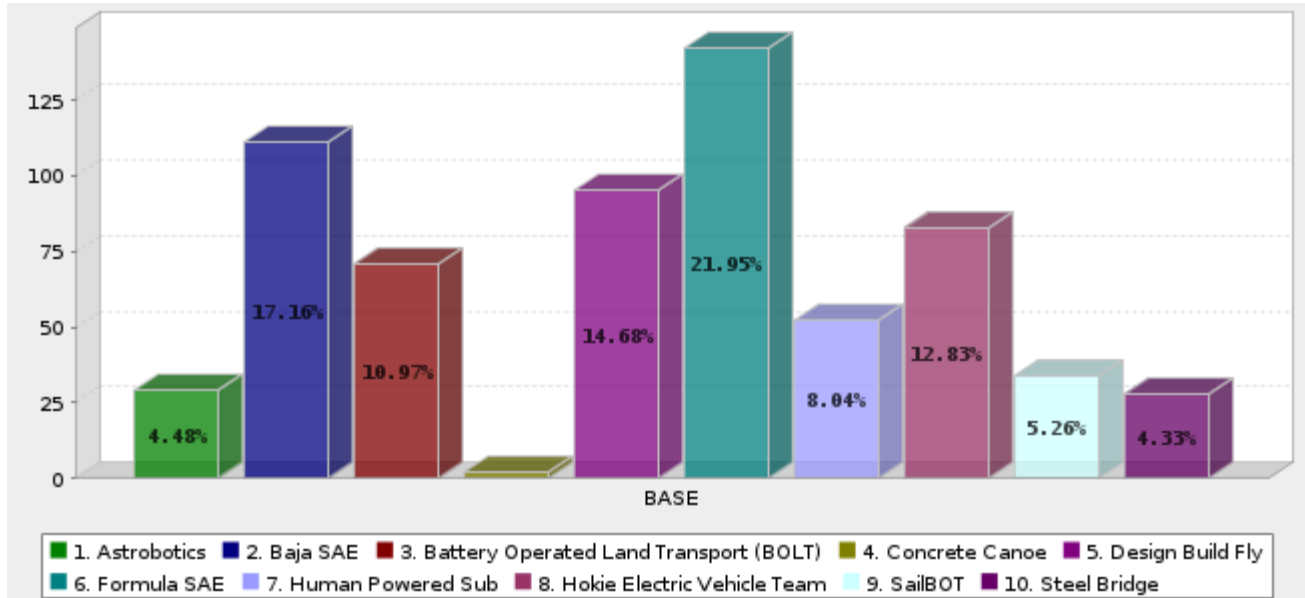
	<b>Answer</b>	<b>Count</b>	<b>Percent</b>
1.	Freshman	174	27.19%
2.	Sophomore	186	29.06%
3.	Junior	168	26.25%
4.	Senior	102	15.94%
5.	Grad Student	10	1.56%
	<b>Total</b>	<b>640</b>	<b>100%</b>
<b>Mean :</b>	<b>2.4</b>	<b>Standard Deviation :</b>	<b>1.1</b>

**Academic Credit Status:**



	<b>Answer</b>	<b>Count</b>	<b>Percent</b>
1.	Senior Design Credit	59	8.95%
2.	Volunteer (no academic credit)	400	60.70%
3.	Independent Study	96	14.57%
4.	Undergraduate Research	22	3.34%
5.	Other	82	12.44%
	<b>Total</b>	<b>659</b>	<b>100%</b>
<b>Mean :</b>	<b>2.5</b>	<b>Standard Deviation :</b>	<b>1.1</b>

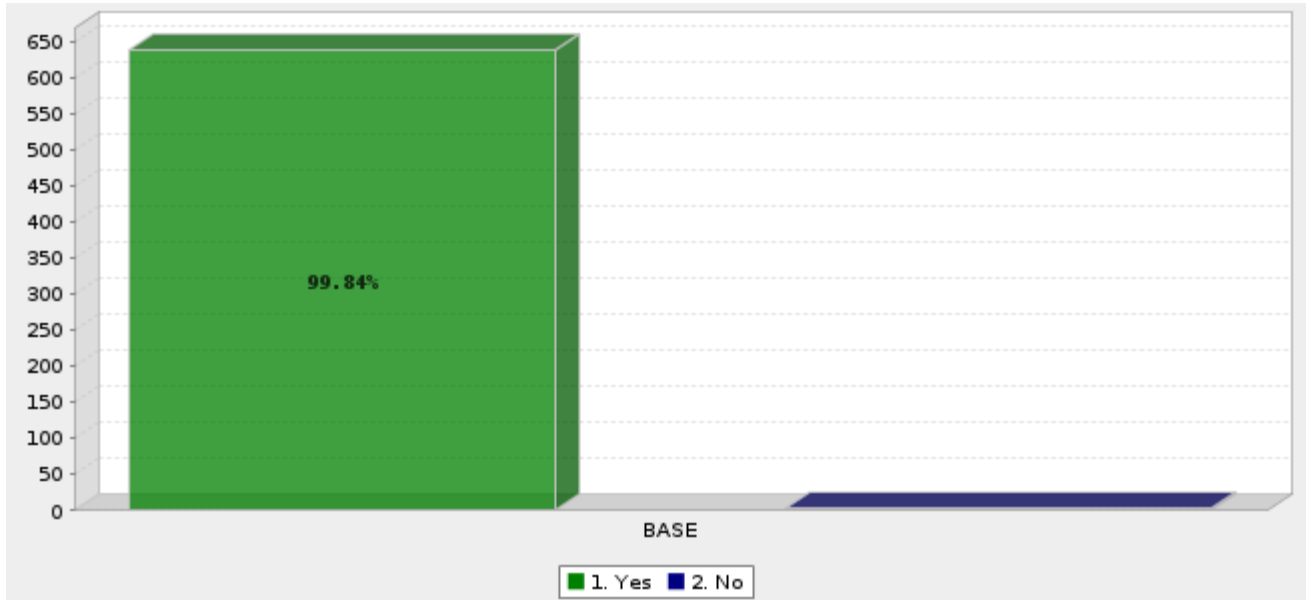
Ware Lab Team:



	Answer	Count	Percent
1.	Astrobotics	29	4.48%
2.	Baja SAE	111	17.16%
3.	Battery Operated Land Transport (BOLT)	71	10.97%
4.	Concrete Canoe	2	0.31%
5.	Design Build Fly	95	14.68%
6.	Formula SAE	142	21.95%
7.	Human Powered Sub	52	8.04%
8.	Hokie Electric Vehicle Team	83	12.83%
9.	SailBOT	34	5.26%
10.	Steel Bridge	28	4.33%
	Total	647	100%
Mean :	<b>5.3</b>	Standard Deviation :	<b>2.5</b>

**Indicating "yes" certifies that a Ware Lab student:**

- 1- Has read the WL policy manual, knows where to find it, and has signed, and has emailed a scanned confirmation sheet to the WL manager.
- 2- Has passed the WL general quiz posted on Canvas with at least an 85/100.
- 3- Has completed all six online EHS safety trainings.
- 4- Has signed and emailed a scanned version of the WL waiver form to the WL manager.



	Answer	Count	Percent
1.	Yes	638	99.84%
2.	No	1	0.16%
	Total	639	100%
Mean : <b>1.0</b>		Standard Deviation : <b>0.04</b>	