

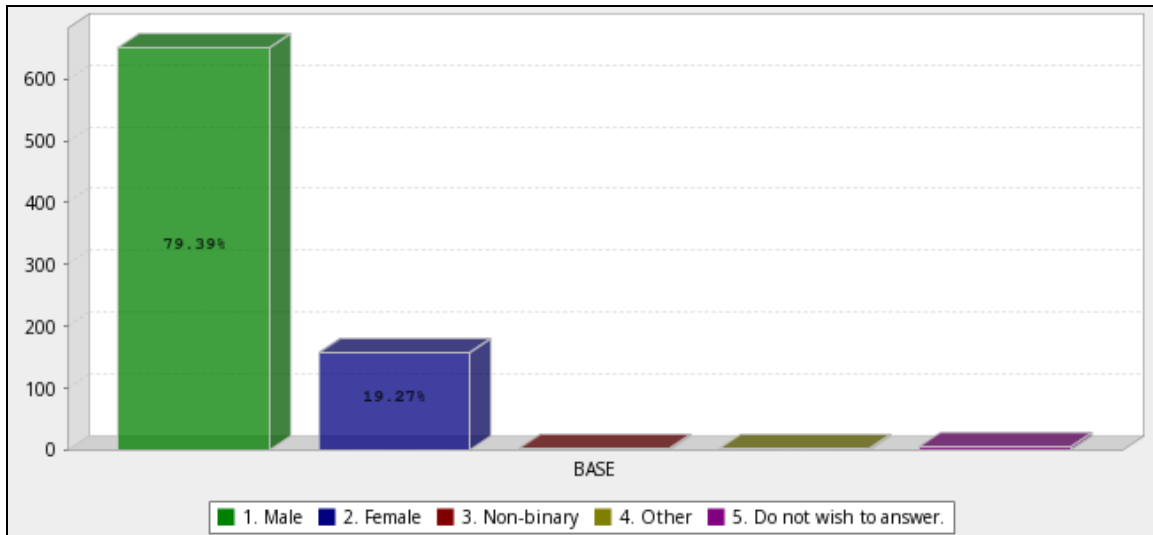
Ware Lab Statistics for AY 2023-24

This report summarizes data collected during the 2023-24 academic year. All students working at the Ware Lab (WL) must complete a survey prior to receiving a lab badge for the current year. Any questions or comments about the content of this report should be directed to the lab manager, Dewey Spangler, at spangler@vt.edu.

Overall Survey Statistics:

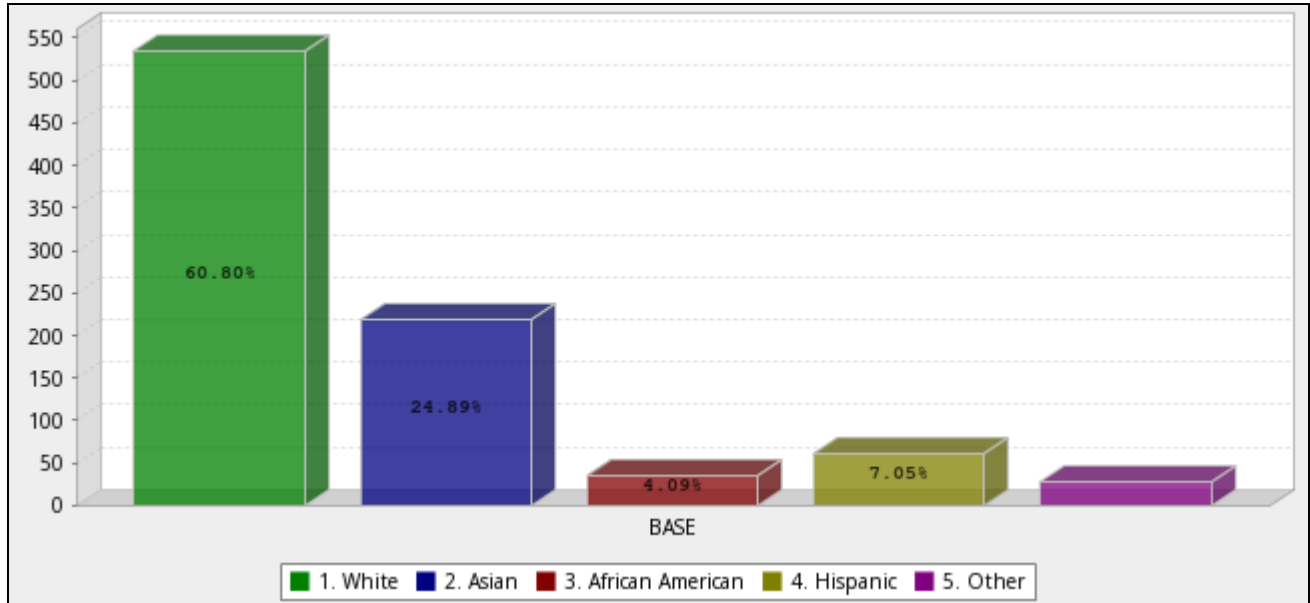
Viewed	Started	Completed	Completion Rate	Drop Outs (After Starting)	Average Time to Complete Survey
2814	833	833	100%	0	9 minutes

Ware Lab Gender:



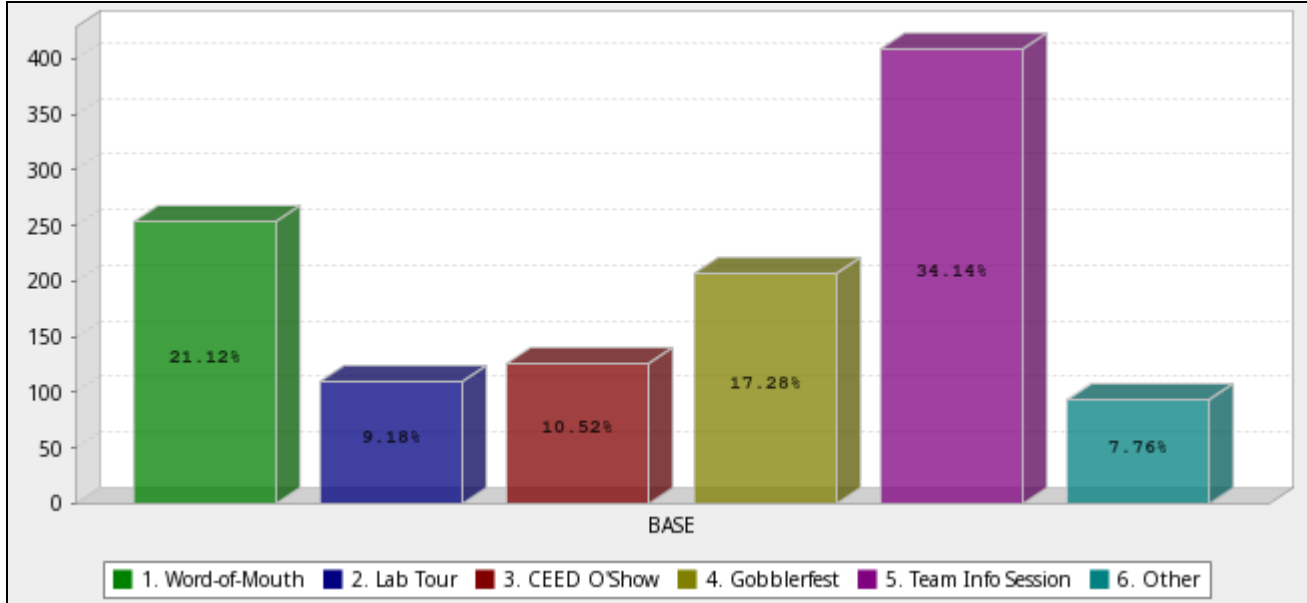
	Answer	Count	Percent
1.	Male	651	79.39%
2.	Female	158	19.27%
3.	Non-binary	3	0.37%
4.	Other	2	0.24%
5.	Do not wish to answer.	6	0.73%
	Total	820	100%

Ware Lab Ethnicity:



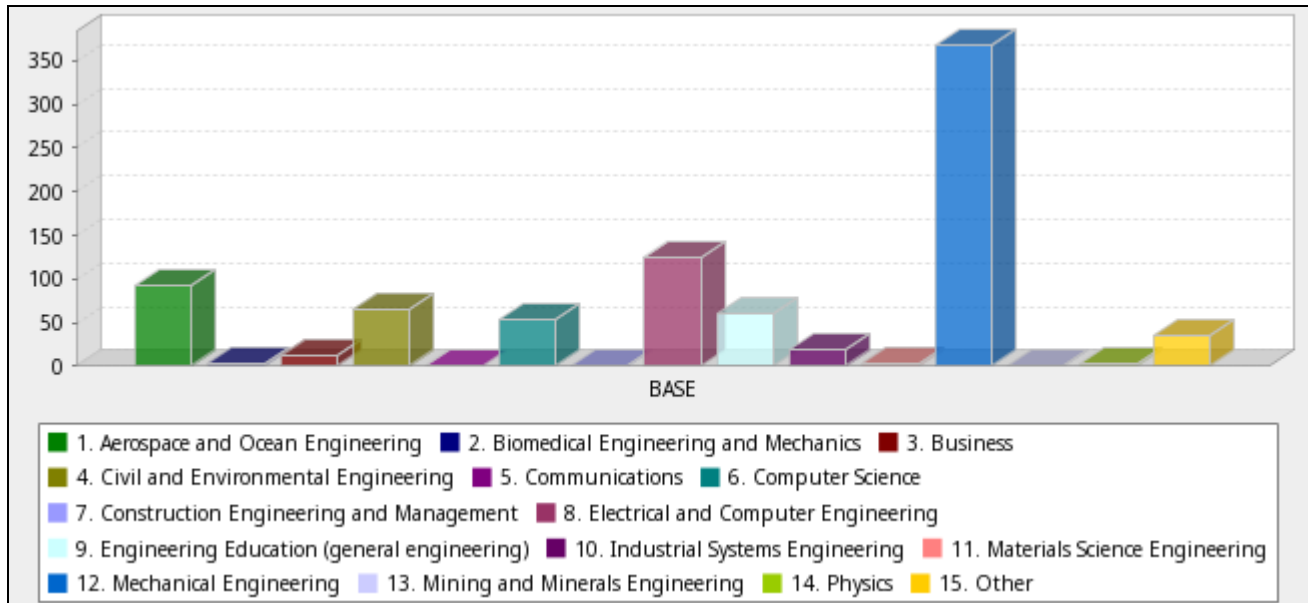
	Answer	Count	Percent
1.	White	535	60.80%
2.	Asian	219	24.89%
3.	African American	36	4.09%
4.	Hispanic	62	7.05%
5.	Other	28	3.18%
	Total	880	100%

How did you learn about Ware Lab?



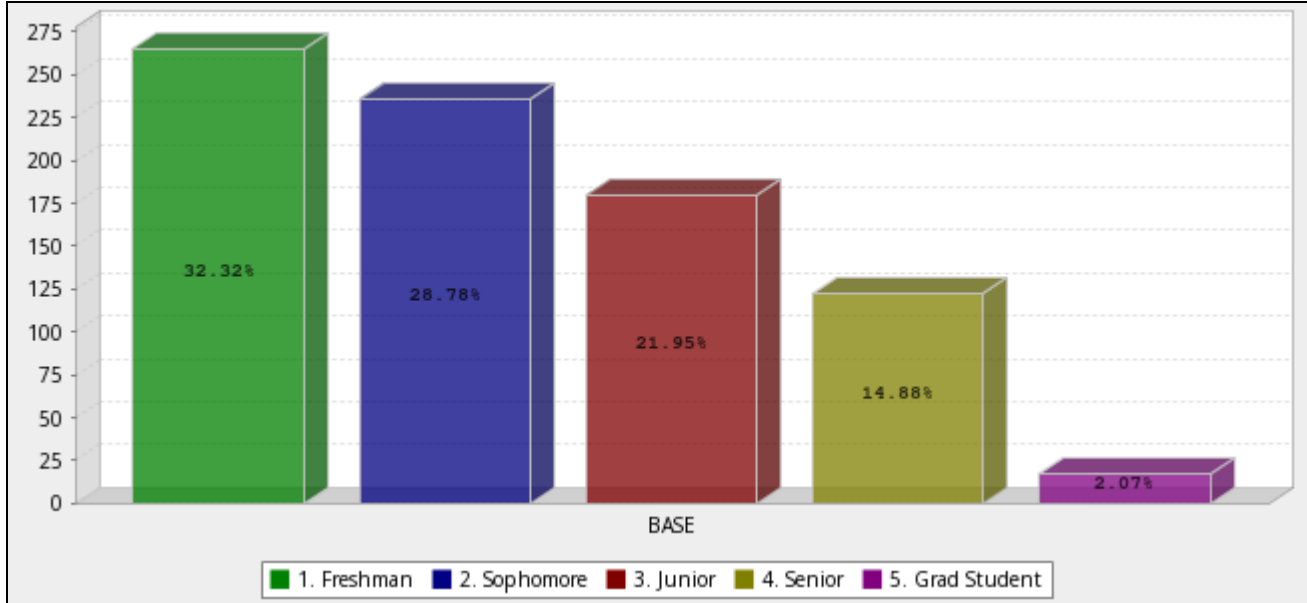
	Answer	Count	Percent
1.	Word-of-Mouth	253	21.12%
2.	Lab Tour	110	9.18%
3.	CEED O'Show	126	10.52%
4.	Gobblerfest	207	17.28%
5.	Team Info Session	409	34.14%
6.	Other	93	7.76%
	Total	1198	100%

Academic Major:



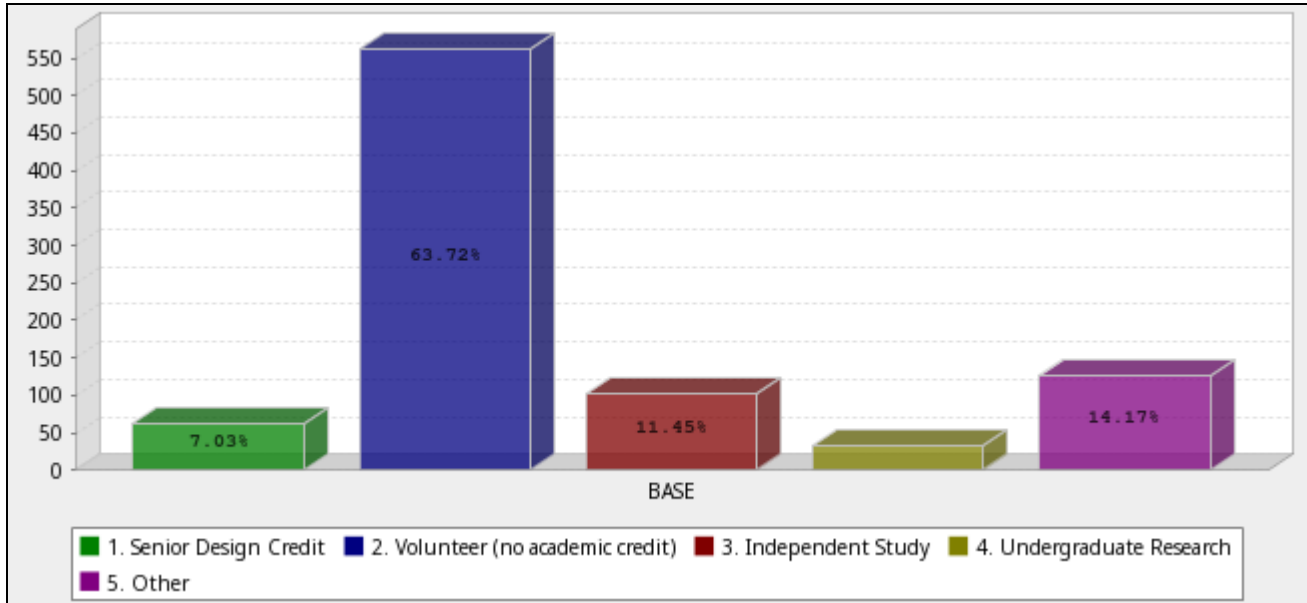
	Answer	Count	Percent
1.	Aerospace and Ocean Engineering	92	10.93%
2.	Biomedical Engineering and Mechanics	4	0.48%
3.	Business	13	1.54%
4.	Civil and Environmental Engineering	66	7.84%
5.	Communications	0	0.00%
6.	Computer Science	53	6.29%
7.	Construction Engineering and Management	1	0.12%
8.	Electrical and Computer Engineering	124	14.73%
9.	Engineering Education (general engineering)	60	7.13%
10.	Industrial Systems Engineering	19	2.26%
11.	Materials Science Engineering	4	0.48%
12.	Mechanical Engineering	367	43.59%
13.	Mining and Minerals Engineering	1	0.12%
14.	Physics	3	0.36%
15.	Other	35	4.16%
	Total	842	100%

Academic Level:



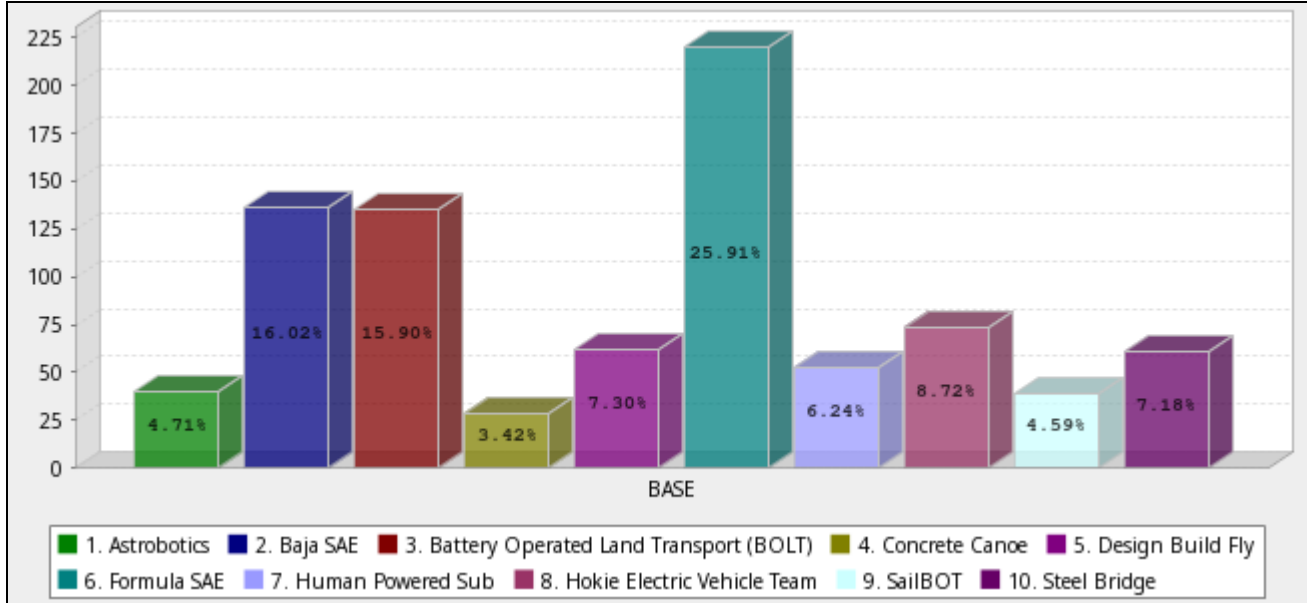
	Answer	Count	Percent
1.	Freshman	265	32.32%
2.	Sophomore	236	28.78%
3.	Junior	180	21.95%
4.	Senior	122	14.88%
5.	Grad Student	17	2.07%
	Total	820	100%

Academic Credit:



	Answer	Count	Percent
1.	Senior Design Credit	62	7.03%
2.	Volunteer (no academic credit)	562	63.72%
3.	Independent Study	101	11.45%
4.	Undergraduate Research	32	3.63%
5.	Other	125	14.17%
	Total	882	100%

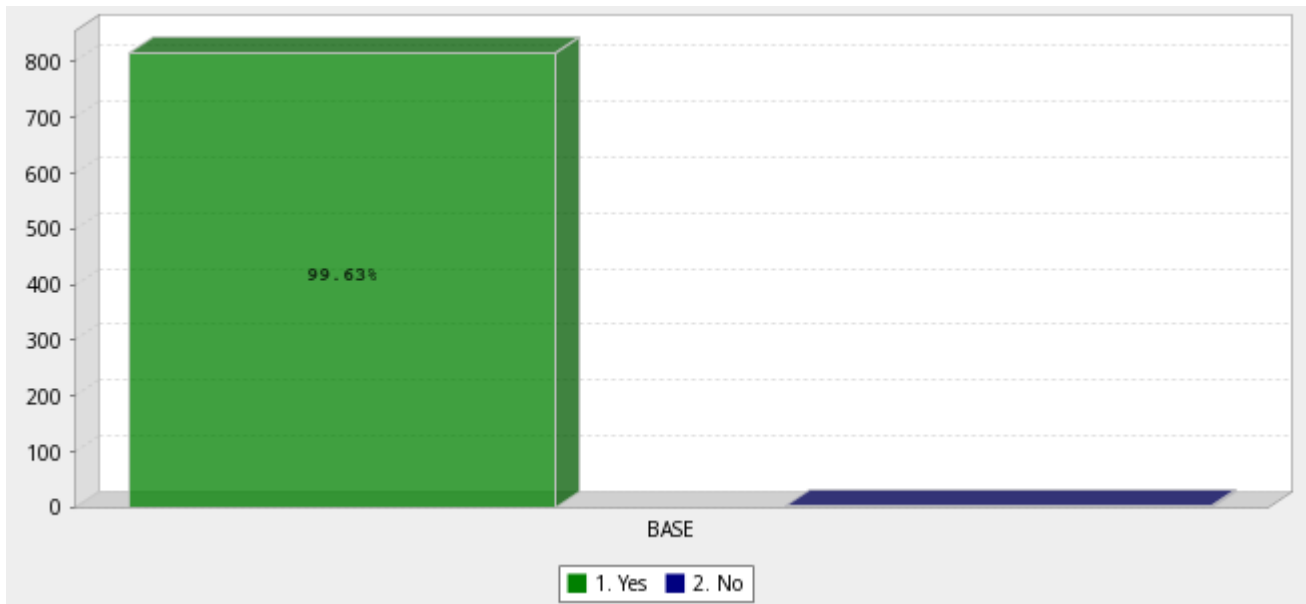
Ware Lab Team:



	Answer	Count	Percent
1.	Astrobotics	40	4.71%
2.	Baja SAE	136	16.02%
3.	Battery Operated Land Transport (BOLT)	135	15.90%
4.	Concrete Canoe	29	3.42%
5.	Design Build Fly	62	7.30%
6.	Formula SAE	220	25.91%
7.	Human Powered Sub	53	6.24%
8.	Hokie Electric Vehicle Team	74	8.72%
9.	SailBOT	39	4.59%
10.	Steel Bridge	61	7.18%
	Total	849	100%

Indicating "yes" certifies that a Ware Lab student:

- 1- Has read the WL policy manual, knows where to find it, and has signed, and has emailed a scanned confirmation sheet to the WL manager.
- 2- Has passed the WL general quiz posted on Canvas with at least an 85/100.
- 3- Has completed all six online EHS safety trainings.
- 4- Has signed and emailed a scanned version of the WL waiver form to the WL manager.



	Answer	Count	Percent
1.	Yes	816	99.63%
2.	No	3	0.37%
	Total	819	100%